

Chapter Three:
Planning and Requirements:

3.1 Use Case Diagram

The diagram shows the actors and use cases of the system extracted from the functional list in section ().

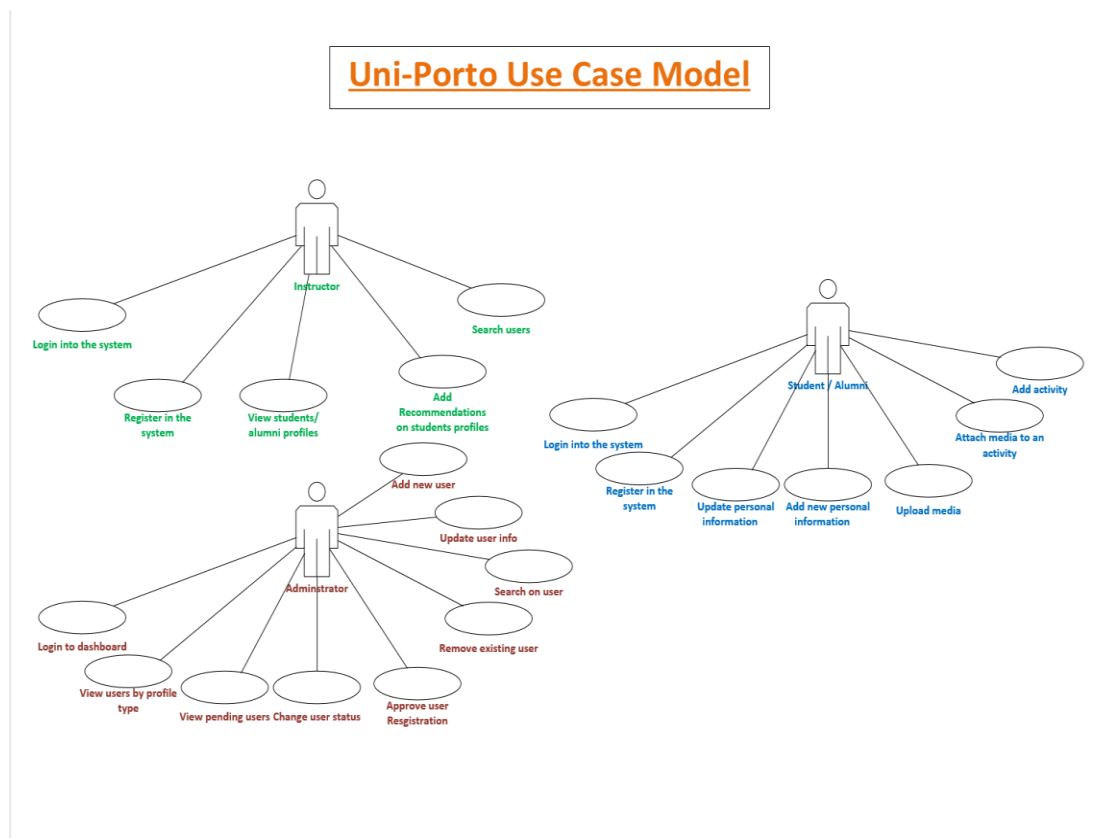


Figure 1 - Use Case Diagram:

3.2 Activity Diagram

3.2.1 Add User by Admin

The activity shows the function of adding a user according to the use case.

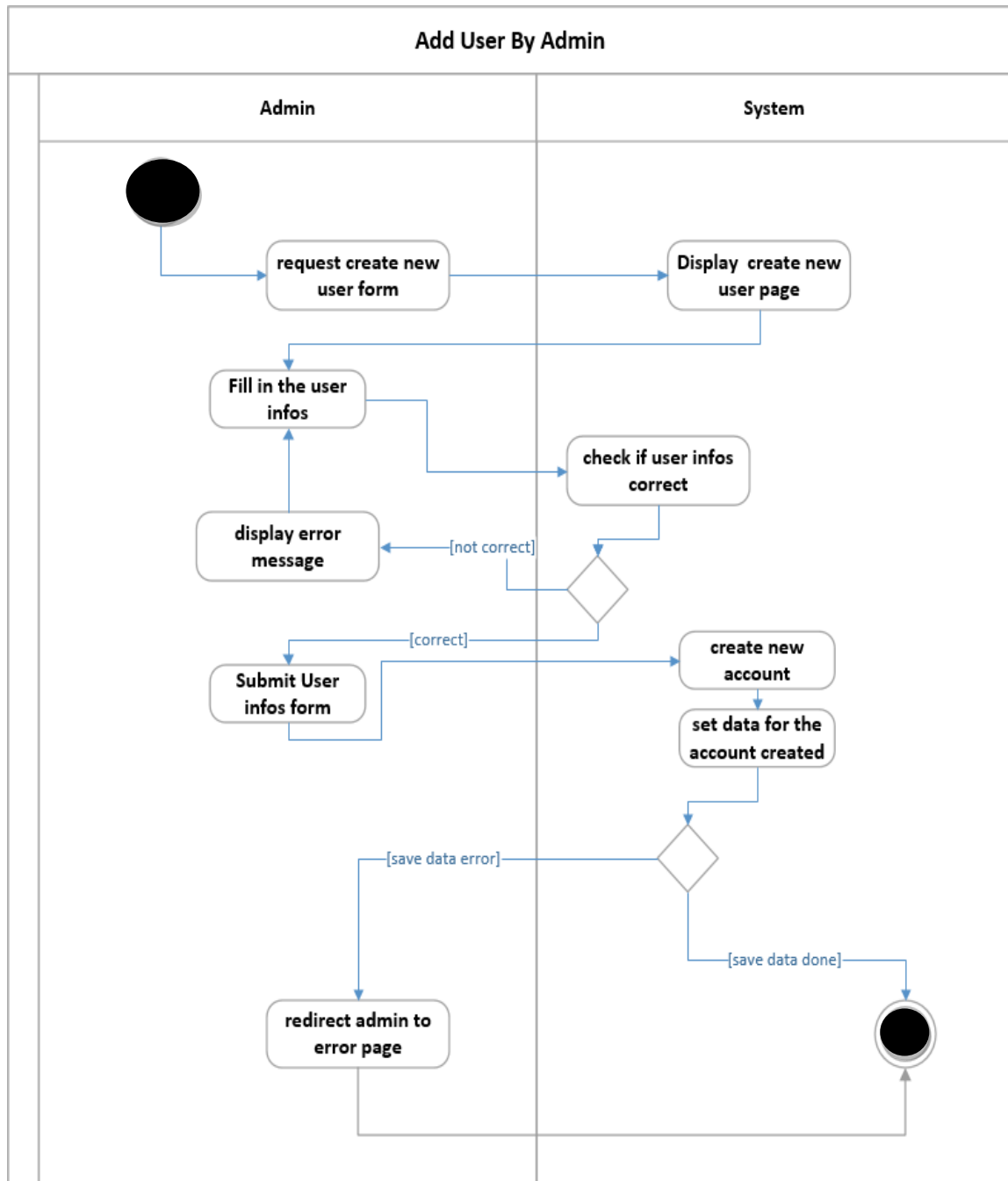


Figure 2 – Add user by admin – Activity Diagram

3.2.4 Add Activity

The activity shows the function of adding activity by the user according to the use case.

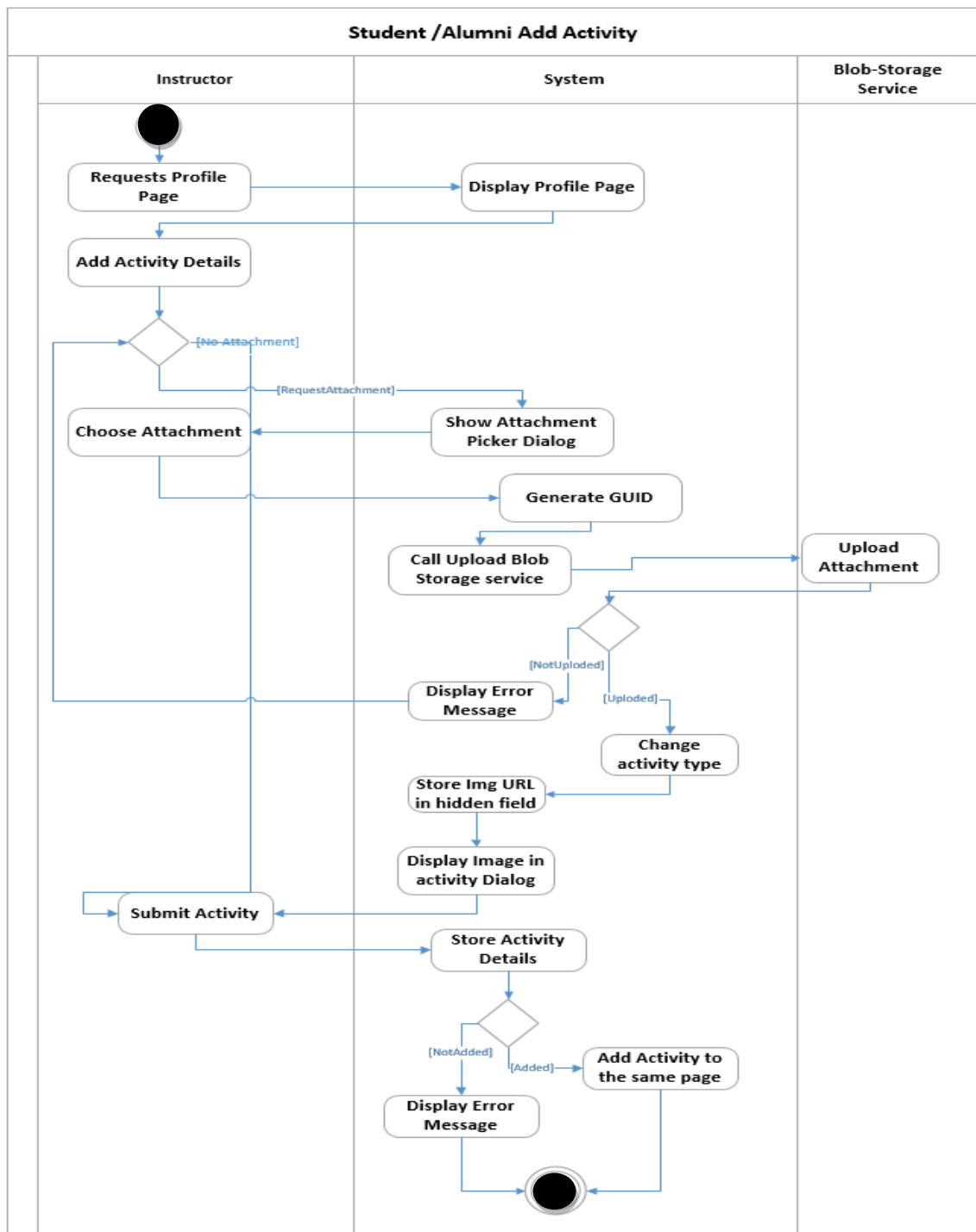


Figure 3 - Add Activity – Activity Diagram

3.3 Sequence Diagrams:

3.1.1 Add User by Admin

This sequence shows how admin adds a user, the classes involved in this function are ...

Add User By Admin Sequence Diagram :

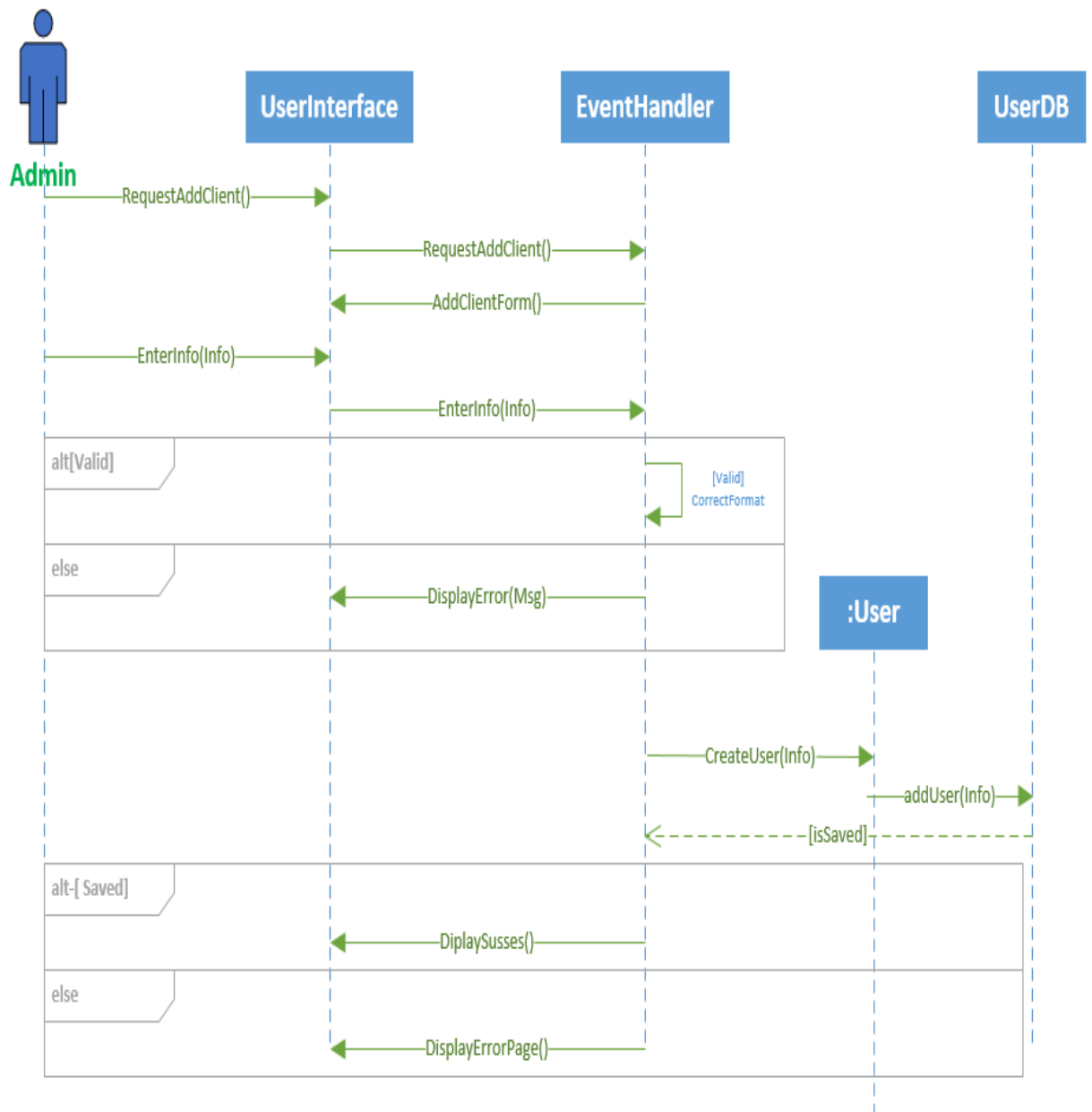


Figure 4 - Add User by Admin – Sequence Diagram

3.1.4 Reset Password

This sequence shows how a user can add activity to the DB, the classes involved in this function are

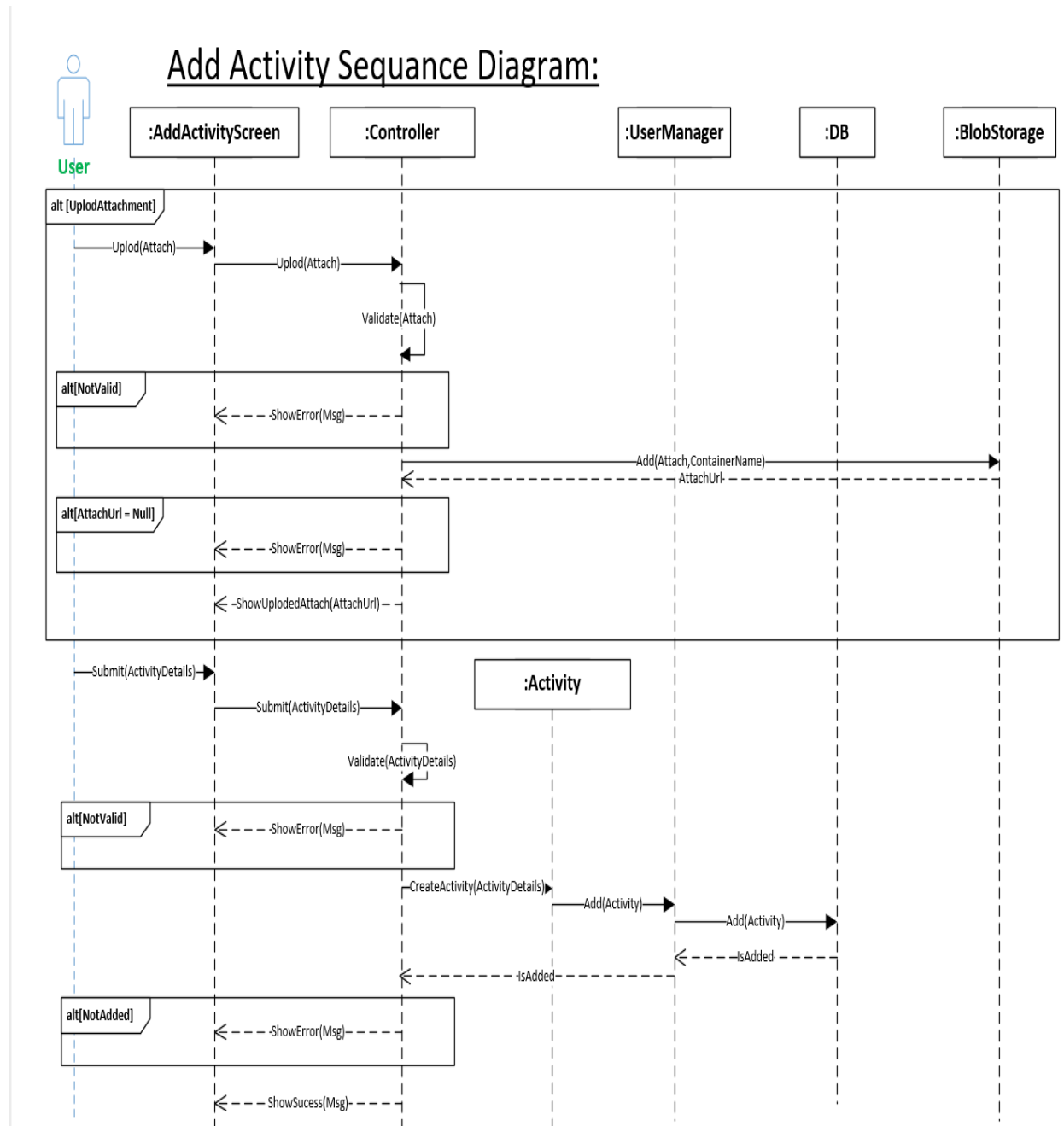


Figure 5 - - Add Activity - Sequence Diagram

3.4 State Diagram

State chart diagram of a student in our system. The states are registered

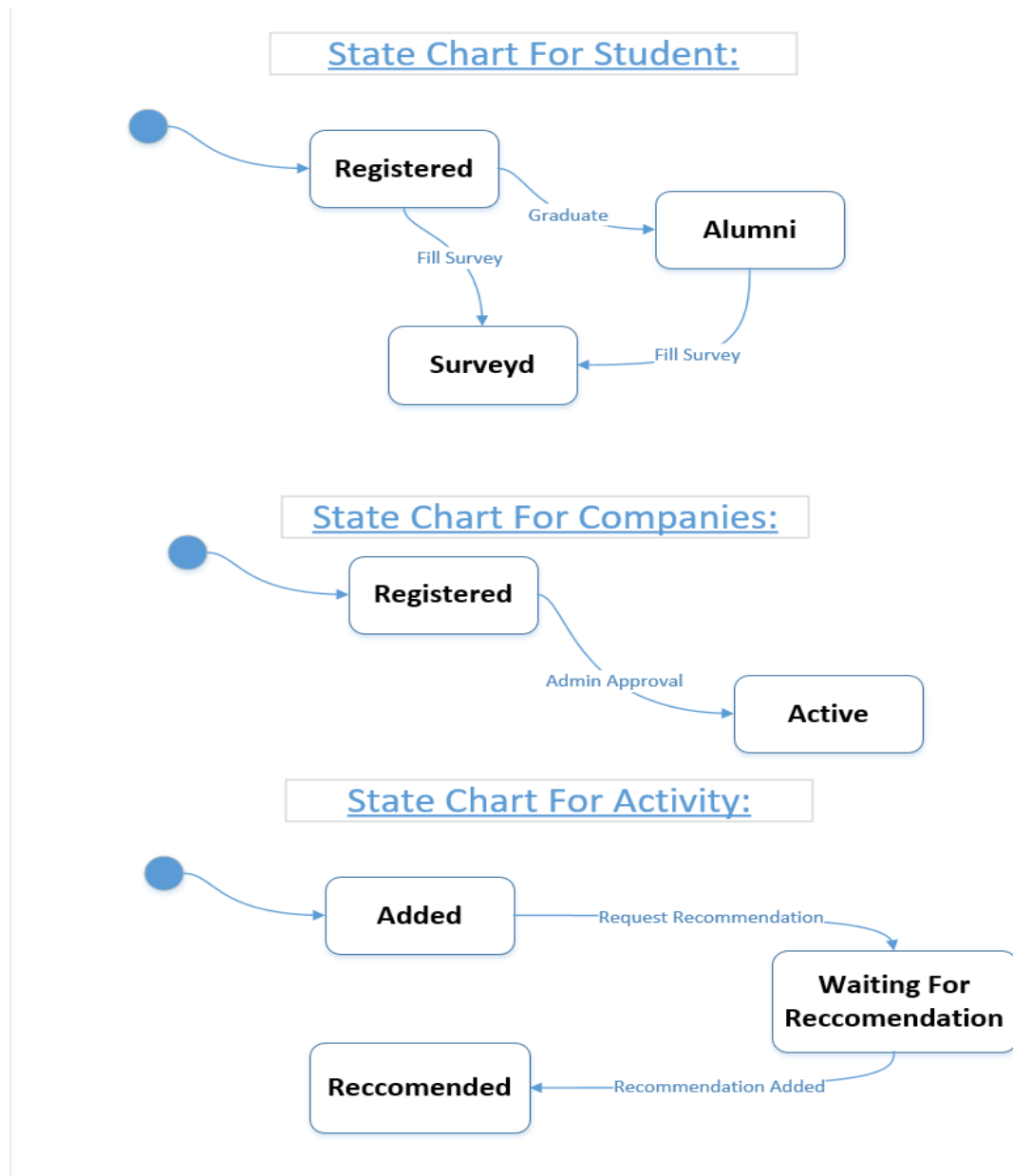


Figure 6 - State Diagram

3.5 Design Class Diagram:

Design Class Diagram: Show's all classes in our system, which are

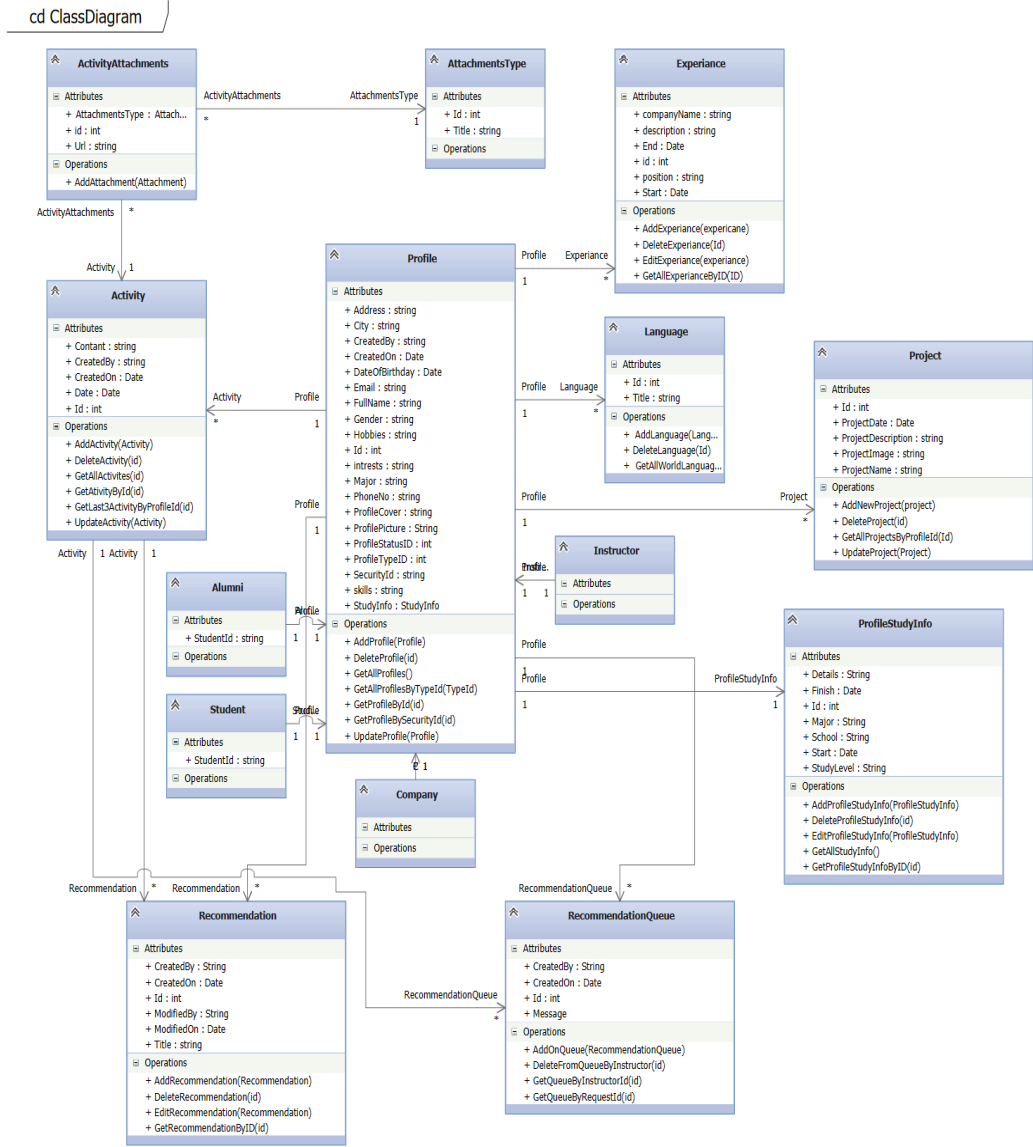


Figure 7 - Design Class Diagram

3.6 Components Diagram:

Shows how components interact in our system. We have website API's which connects to the mobile app., The uniPorto website designed in 3-teir architecture...

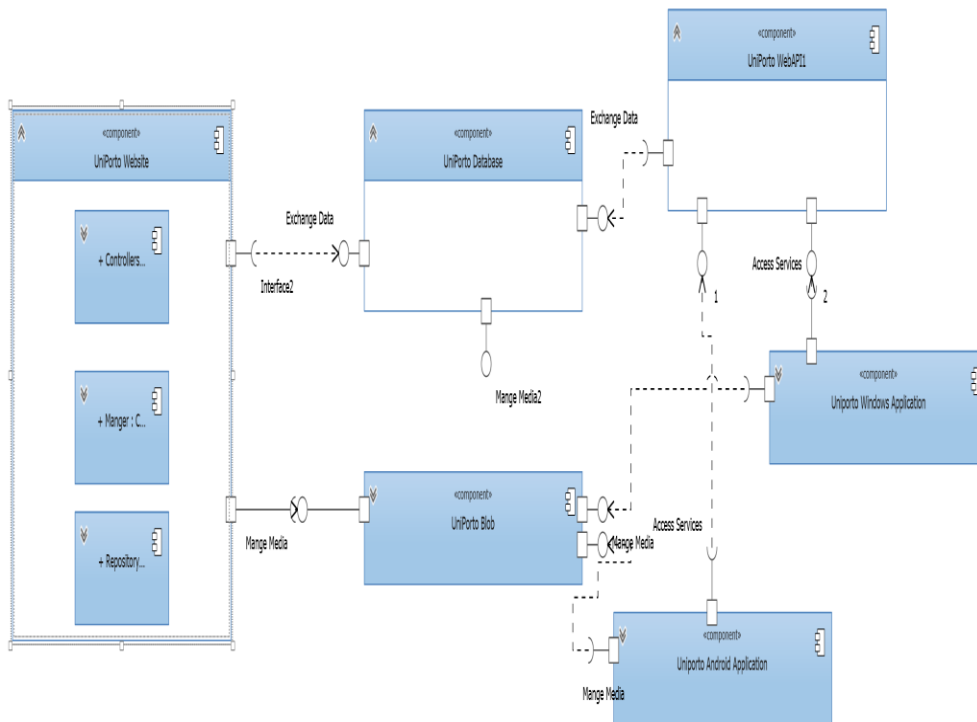


Figure 8 - Components Diagram .

3.7 Deployment Diagram

Deployment diagram contains the following devices: SQL Server 2012 which contains the main database of our system, Web server (IIS server) where our website is deployed. Microsoft Azure (Blob Storage) where the media are stored in . Web server (API Services) where all services of mobile applications are deployed. Mobile Application(Communicate with WEB API using HTTP protocol)

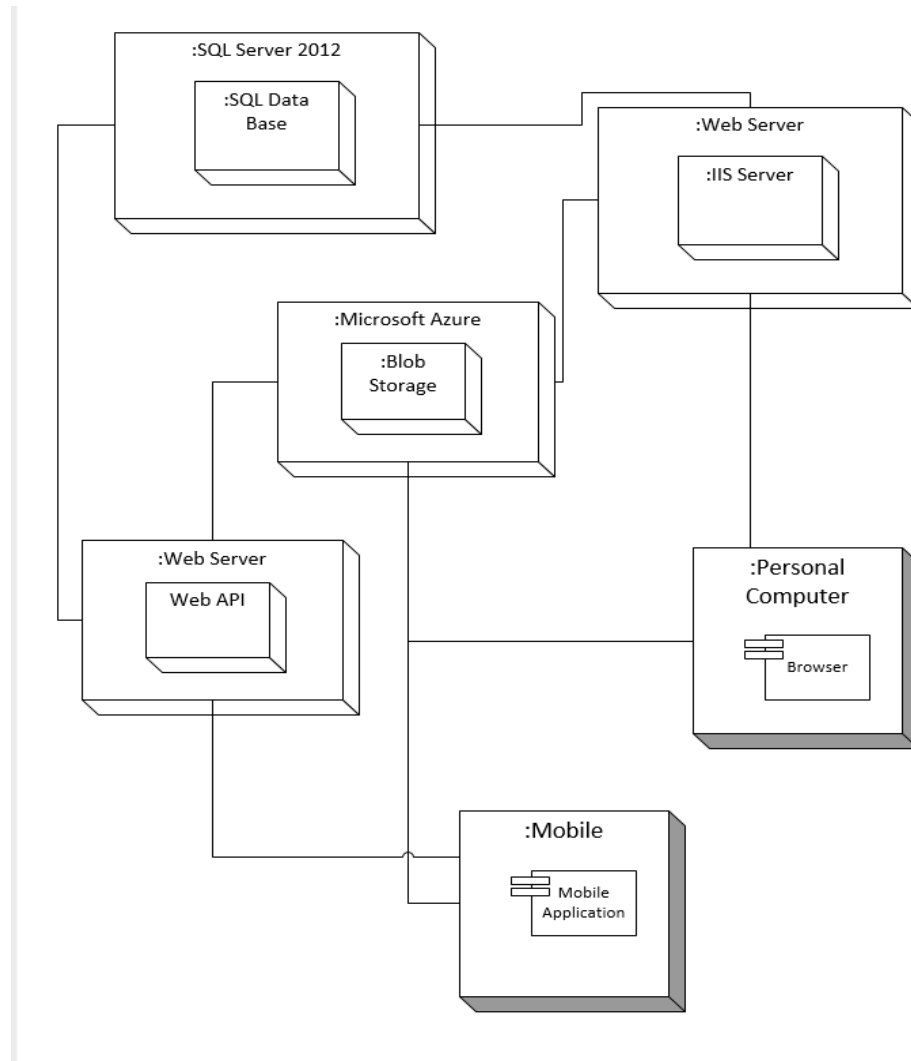


Figure 9 – Deployment diagram

3.8 Output & Input Design (Screens):

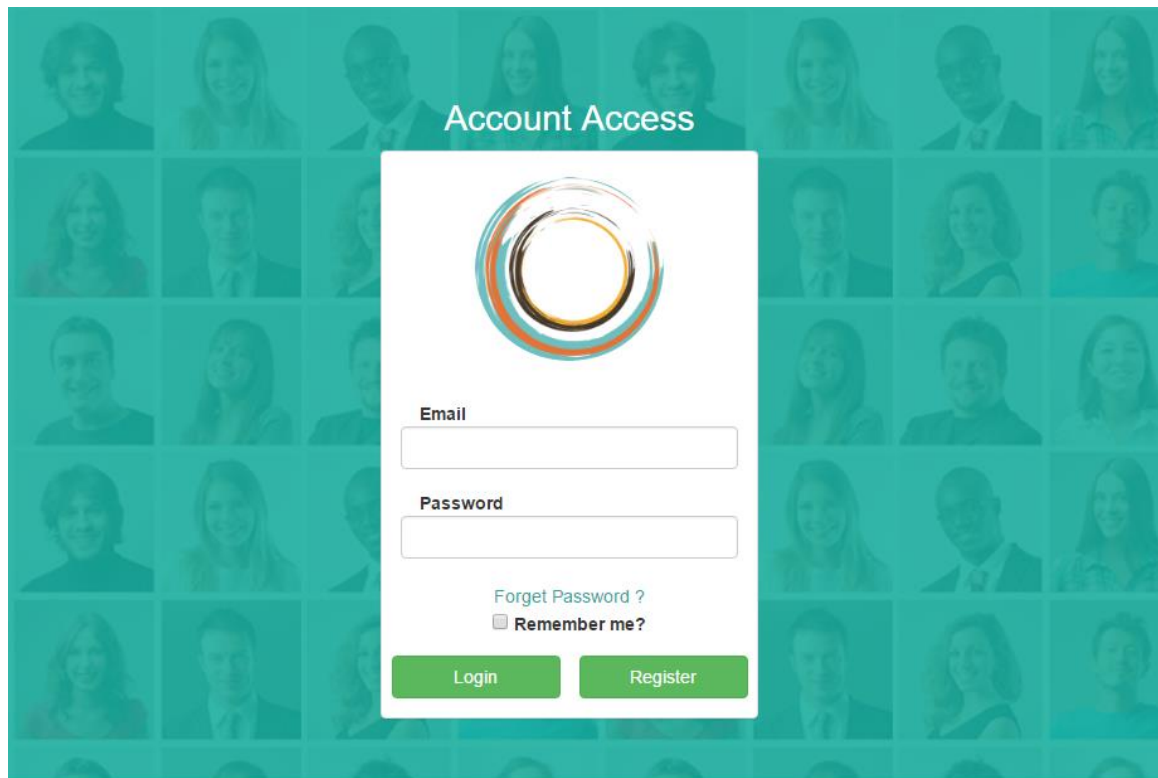


Figure 10 – User login page.

The screen above shows the login page of the website. New users can choose to "Register" first.

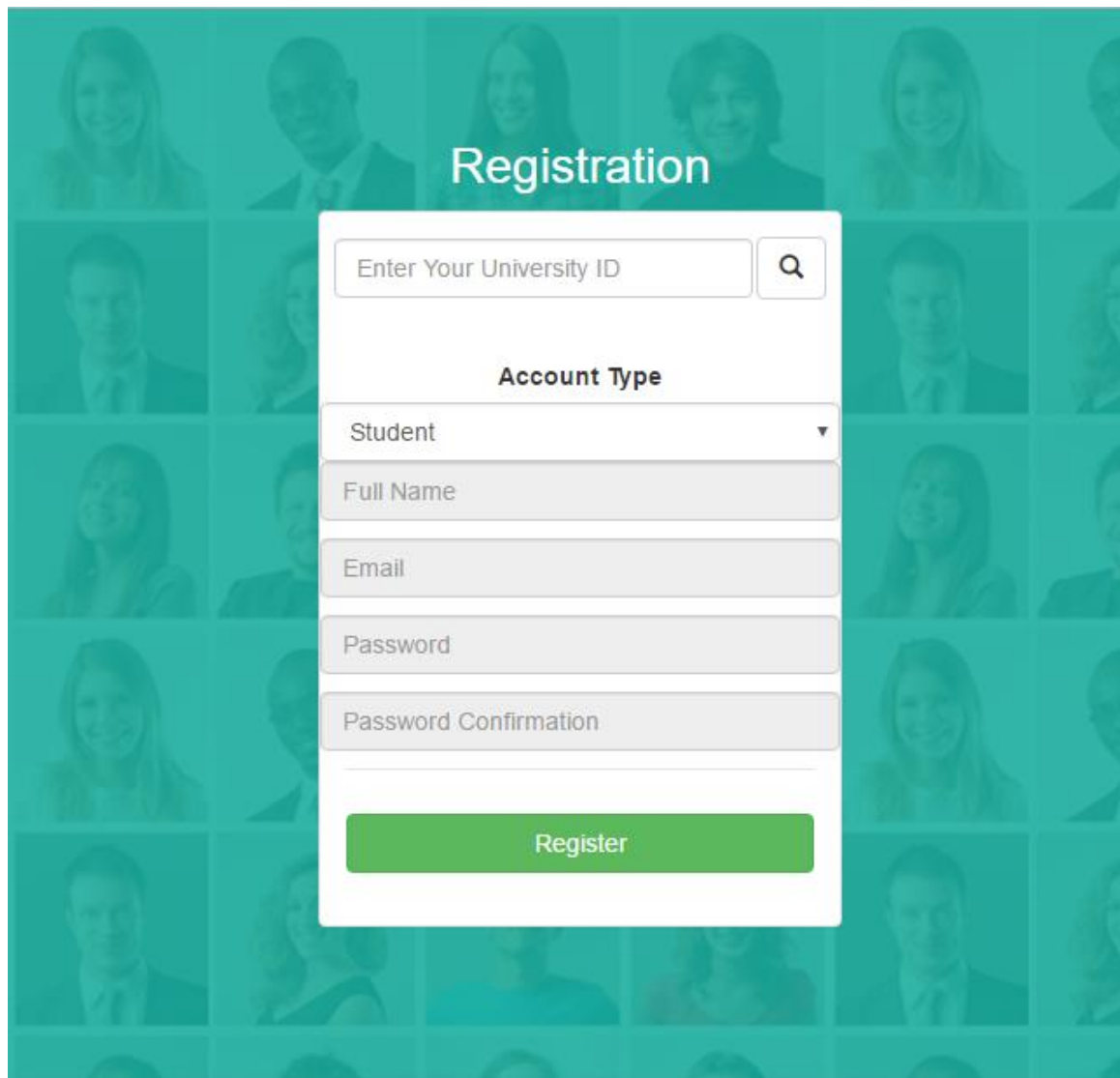


Figure 11 – Registration Page

The registration screen requires the student's name, email and password. This will create an account that waits the admin approval.

view.